

Bridge Life Extension



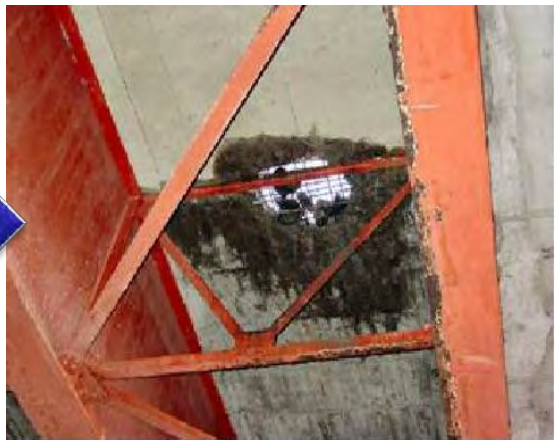
NICHIREKI co., ltd
Shinsuke Tanaka

Bridge Life Extension Needed

【Adhere to Slab, Waterproofing and Pavement】



slab



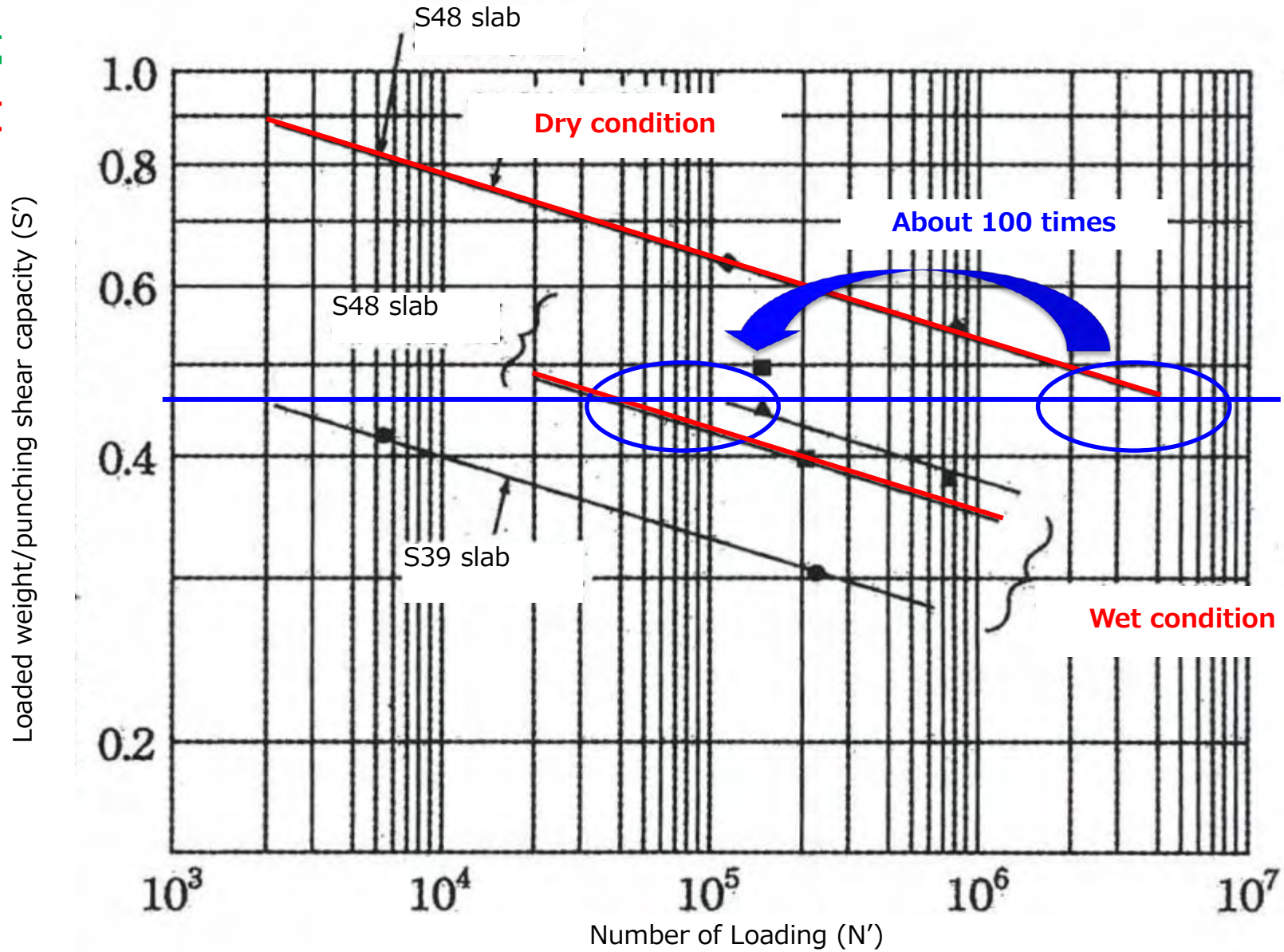
Damage to the slab

citation : Japan Road Assoc.

broken, water

Bridge Life Extension Needed

(c)



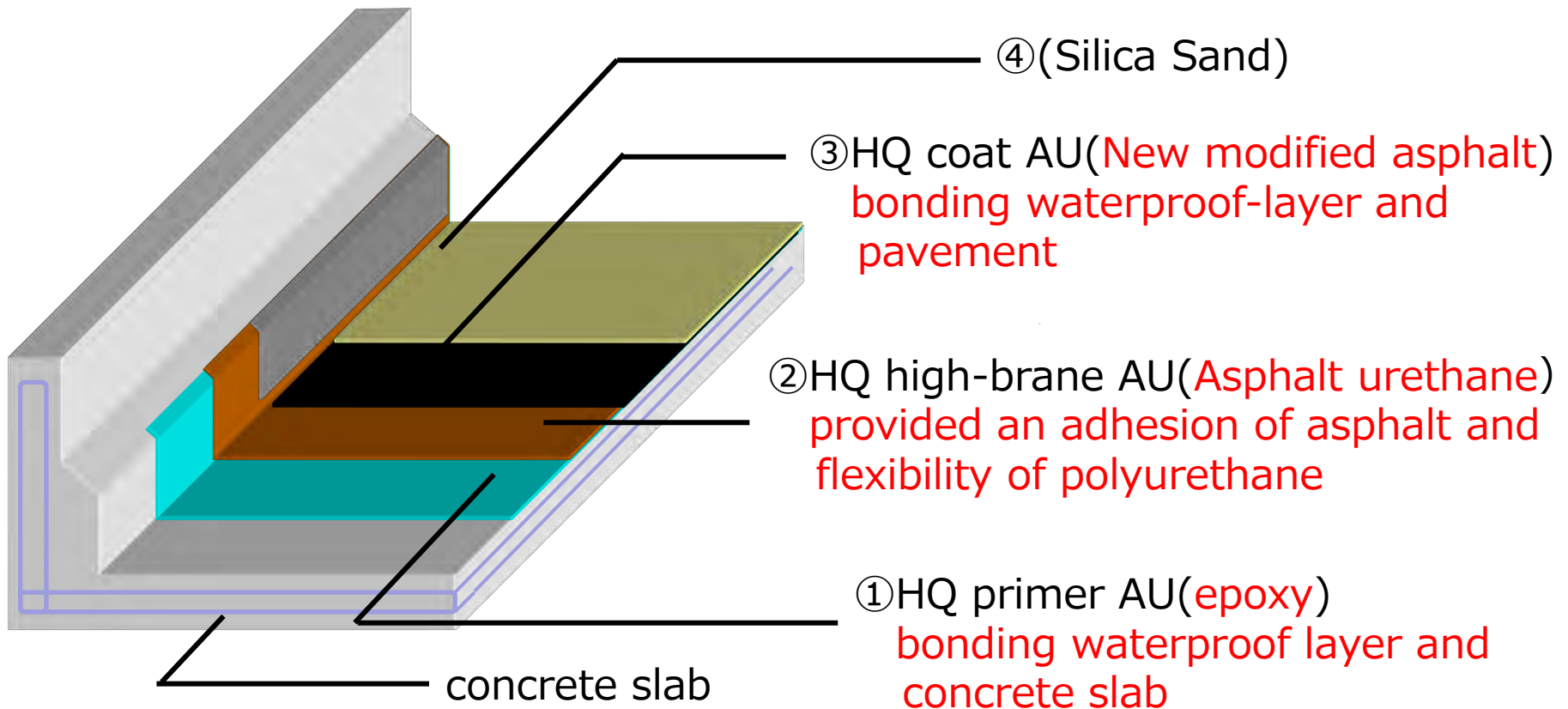
ies

Waterproofing method by NICHIREKI



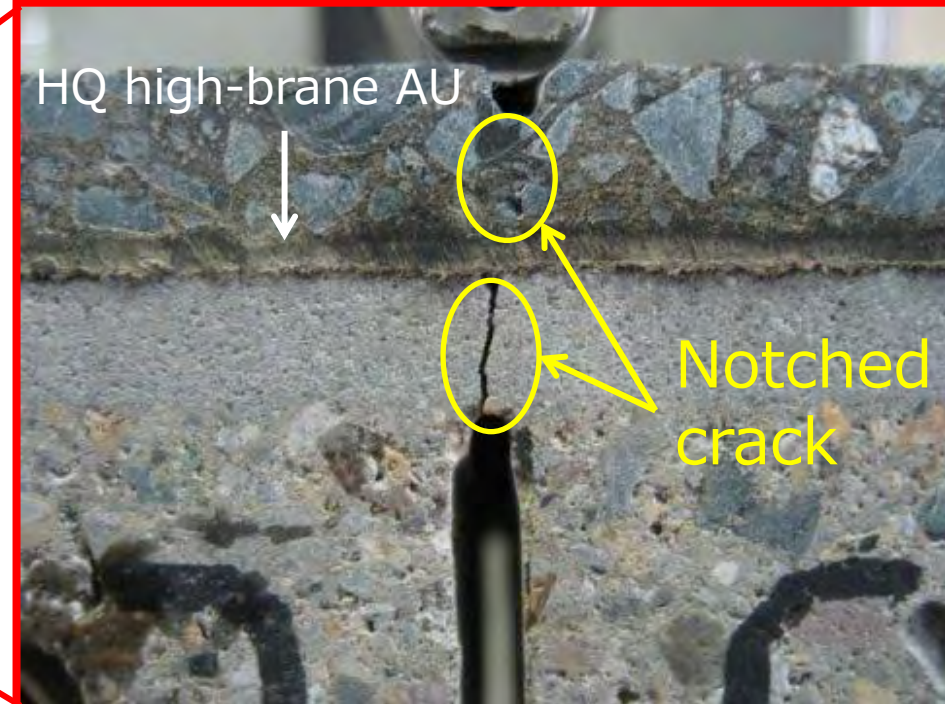
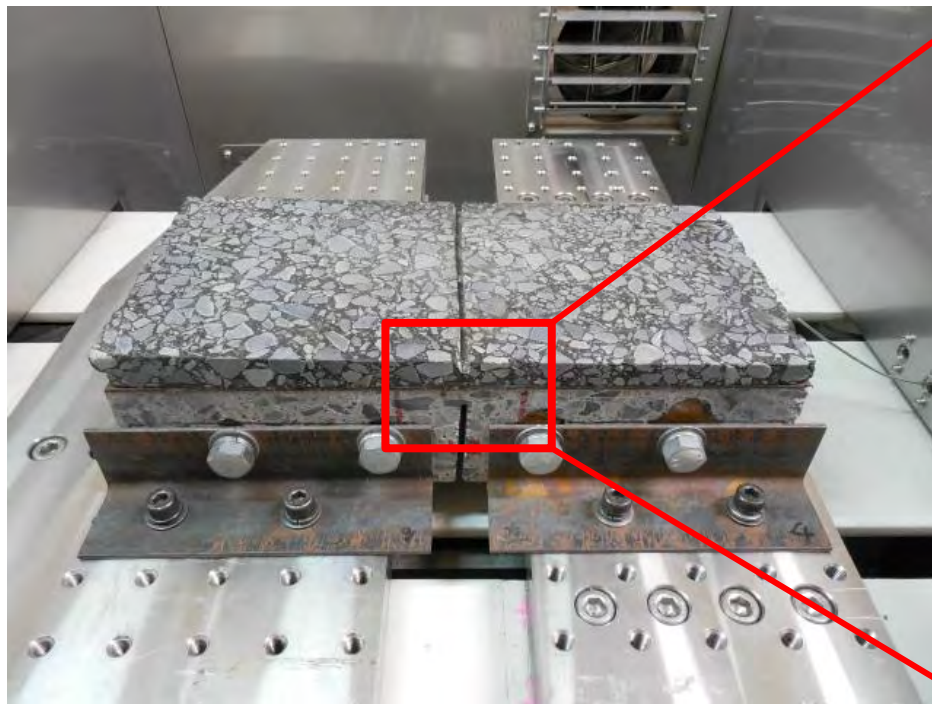
【HQ high-brane AU method】

- This Waterproofing method for slab certified **30 years** of service life test.



The load test 30 years of service life

【Cycle Load Test】

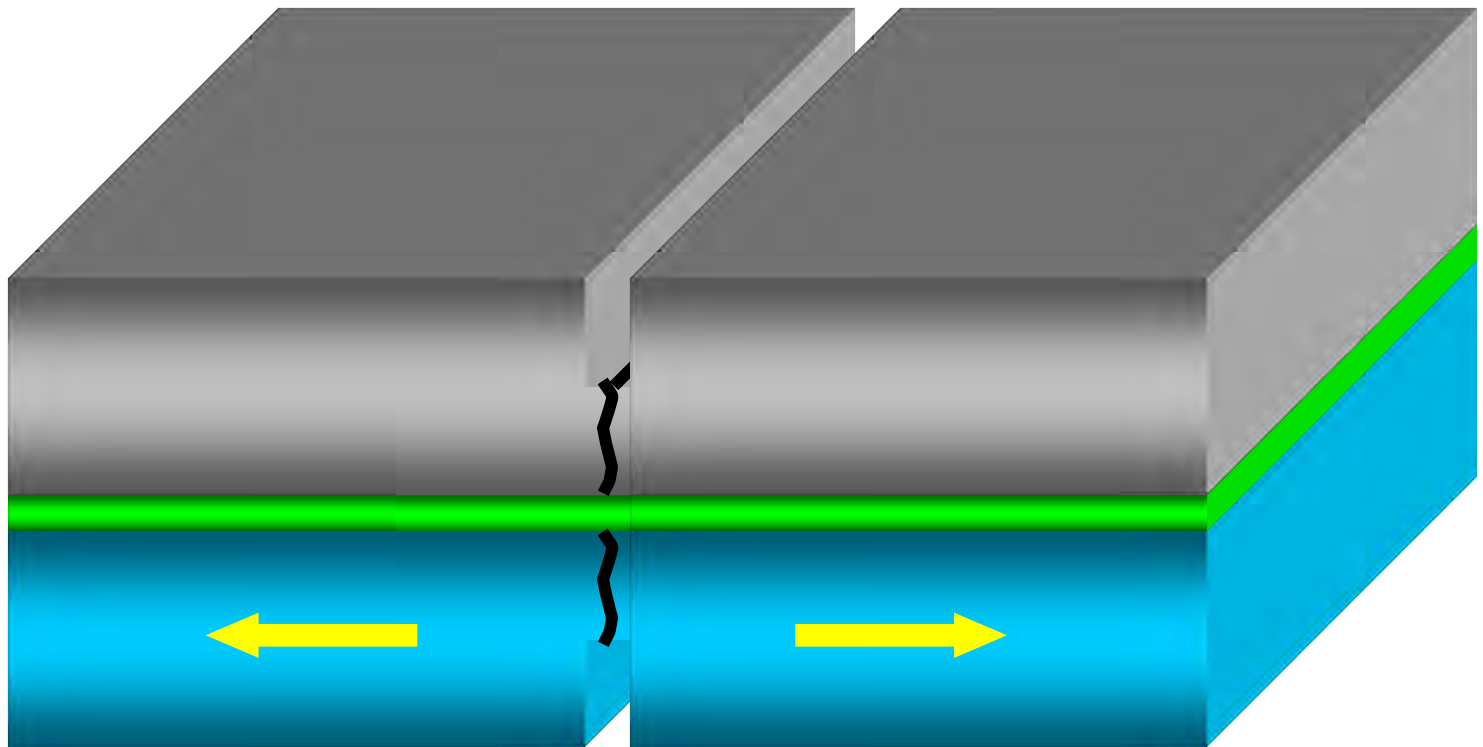


The load test assuming a 30 years of service life



【Test Description】

Initial crack width:0.25mm

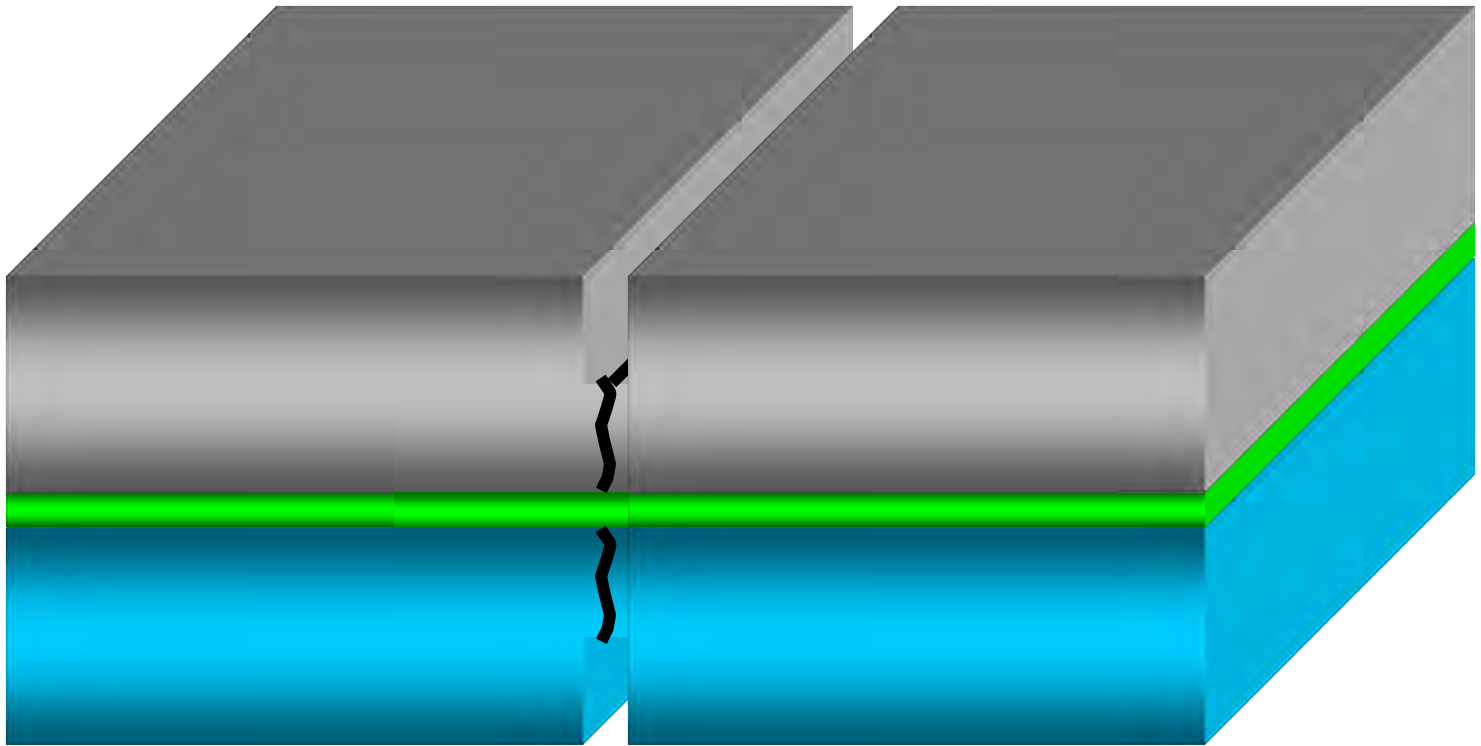


The load test 30 years of service life

【Test Description】

amplitude:0.3mm frequency:10Hz

Number of Load :4.8 million times

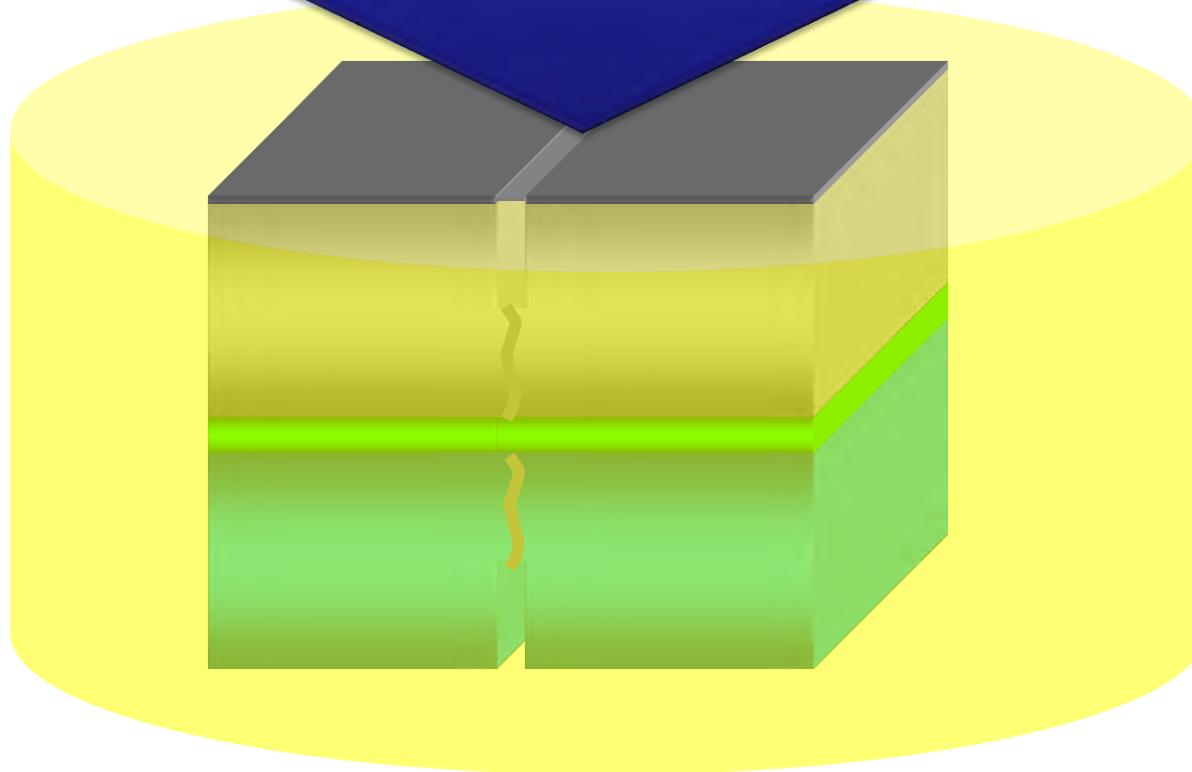


The load test 30 years of service life

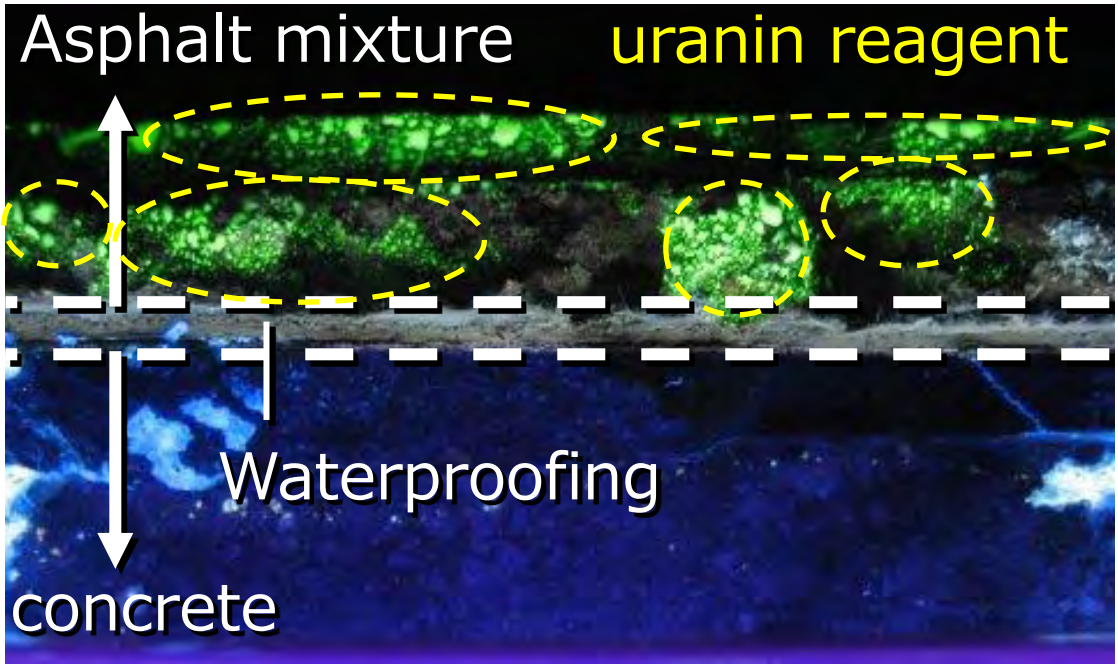
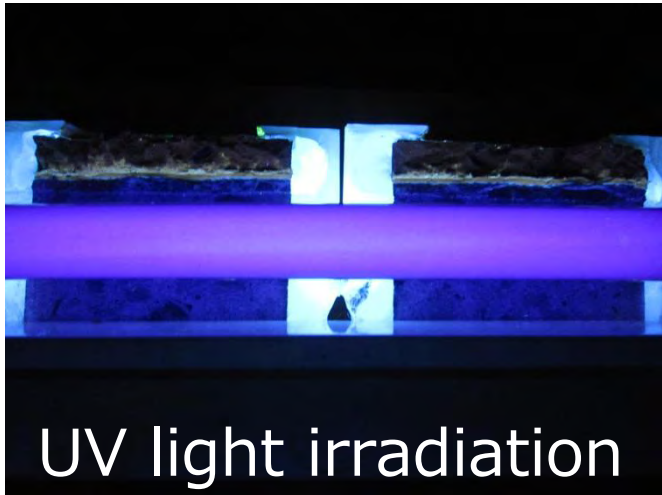
【Test Description】

uranin reagent

0.5MPa 24h



Waterproof of HQ high-brane AU method



- Flexibility of polyurethane cause no rupture to waterproofing by penetrating of aggregate or deformation of the repetition.
- After the load assuming a service of 30 years, it can keep waterproof.



END

Life cycle cost

